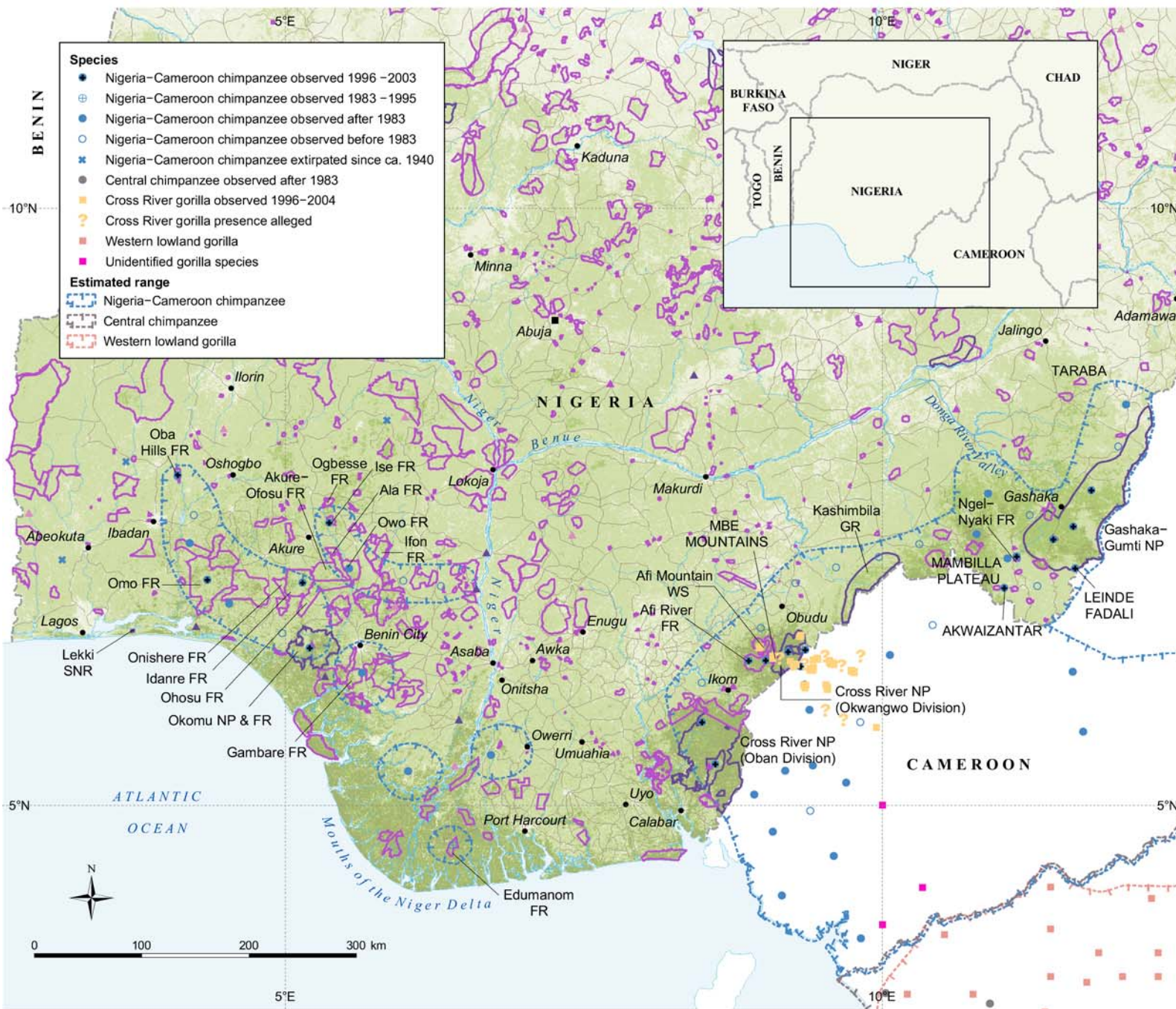


Great Ape Distribution in Nigeria



Compiled by M. Doughty, September, 2004.
 Source: ESRI Data & Maps CD, UNEP-WCMC Datasets, Perment tree cover—University of Maryland (<http://media.umces.edu/edu/forestcover.htm>), Olson et al (2003), Bujinski (2001), Dowsett-Lemaire and Dowsett (2001).
 The contents of this map do not necessarily reflect the views or policies of UNEP-WCMC or contributory organizations. The designations employed and the presentations do not imply the expressions of any opinion whatsoever on the part of UNEP-WCMC or contributory organizations concerning the legal status of any country, territory, city or area or its authority, or concerning the delimitation of its frontiers or boundaries.