



EUROPEAN COMMISSION
DIRECTORATE GENERAL JRC
JOINT RESEARCH CENTRE
Institute for the Protection and Security of the Citizen
SERAC Unit

JRC Info No. 10
28 August 2006
OIL POLLUTION IN LEBANON
By JRC oil spill team

1. Summary

The latest radar image acquired on 27 August at 19:39 UTC does not provide indication that oil is still present along the Lebanese coast from Jieh going north up to Tripoli.

Some additional black features, most likely due to natural phenomena, are present in the area.

2. JRC Analysis of Satellite Imagery

This new radar image (Envisat ASAR Wide Swath) was acquired on 27 August at 19:39 UTC.

In figure 1, a zoomed view over the Lebanese coast is depicted.

After a detailed analysis of the image, no features indicating the presence of oil, with high or medium confidence level, along the Lebanese coast from Jieh up to Tripoli have been identified.

Some small features south of Jubayl and close to the shore, which have been contoured in red, may still be connected to the presence of oil on the sea surface. However, this observation has a very low confidence level.

We notice the presence of dark features in the coastal area from Jieh going up to Beirut most likely due to natural phenomena.

ACKNOWLEDGEMENT

Special thanks are due to ESA for the continuous and timely provision of the imagery acquired over the area.

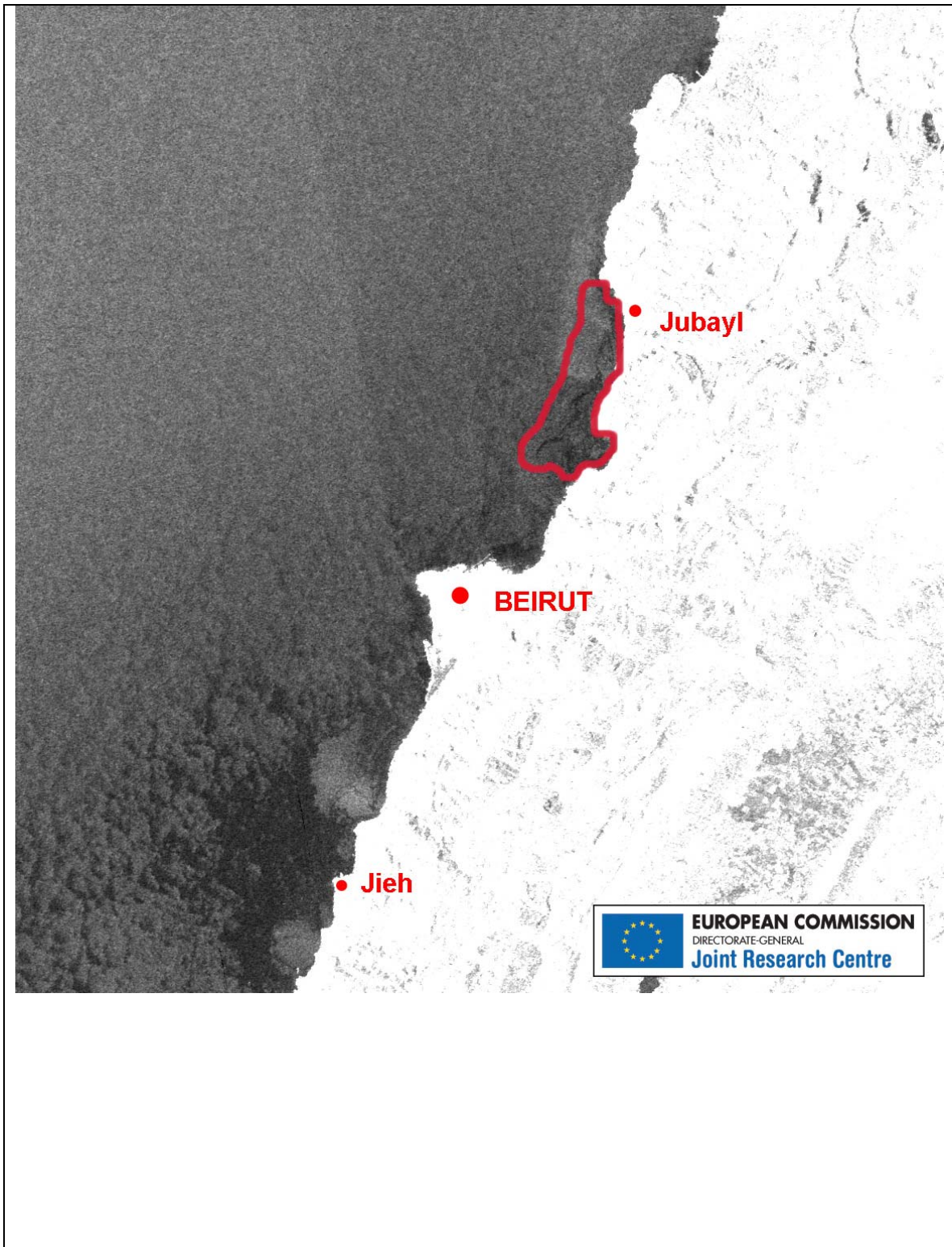


Figure 1 – Zoom in of the ENVISAT image of 27 August over Lebanon.