

Acesta (The large clam *Acesta excavata*, a common member of the Norwegian Lophelia-associated community)



Anemone (Two anemones (*Protanthea simplex*) thriving in the coral framework)



Anthothela (The octocoral *Anthothela grandiflora*)



Coral Rubble (a major subhabitat, the coral rubble aprons)



**Net (Gostfishing at 850m depth in the coral habitat, Porcupine Seabight
(© IFREMER, CARACOLE 2001))**



Lumbfish (The lumbfish (Brosme brosme) searching for food in the coral reef)



Monkfish (An annoyed monkfish (Lophius))



Munida Fish Fight (A meeting of squat lobsters)



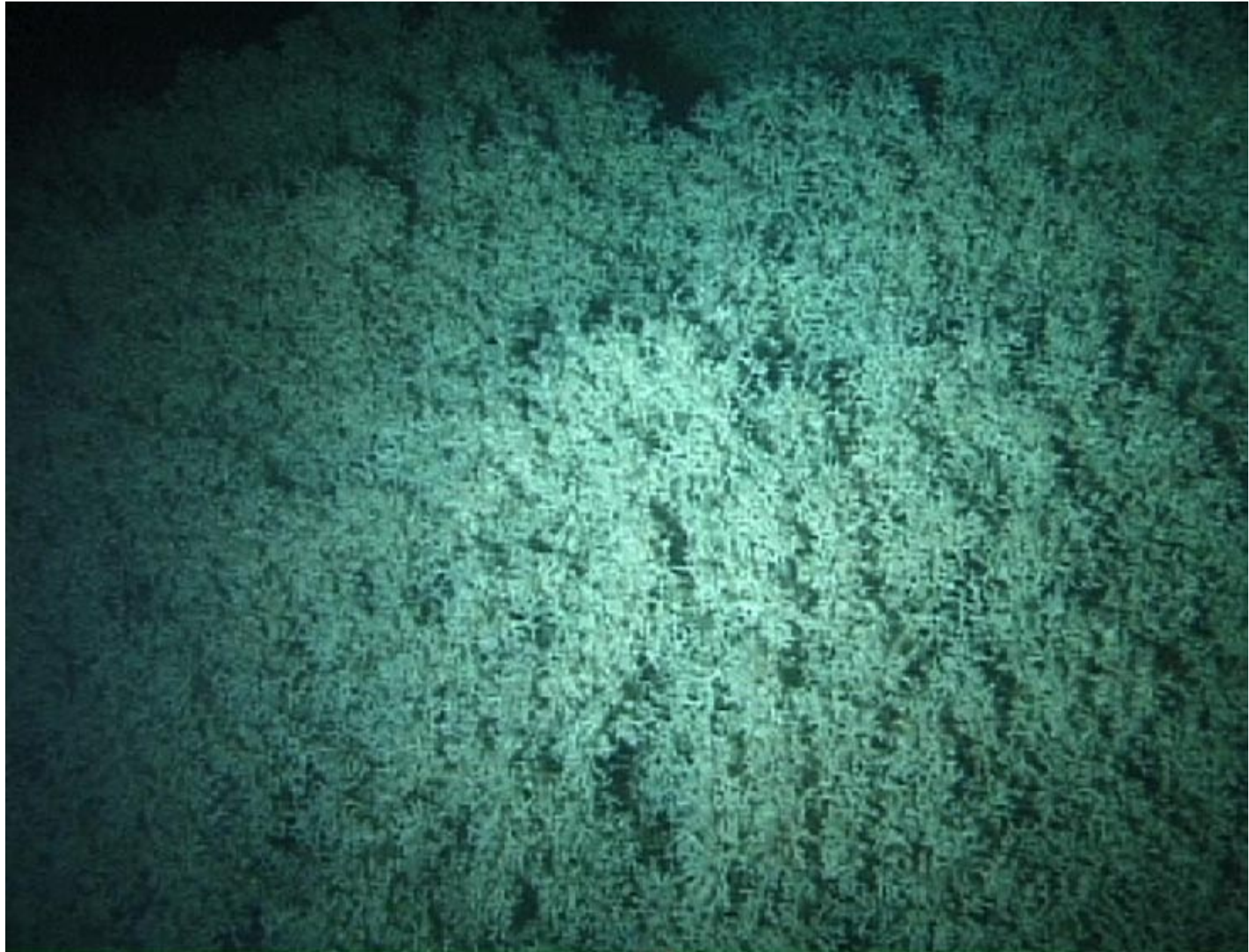
Munida Fish (One of the most common squat-lobsters, Munida)



**Pecten (Swimming clam (Chlamys) in the reef with an anemone
(*Protanthea simplex*) in the background)**



Reef Top (Top of a Lophelia reef)



Rotten Geodia (A rotten Geodia sponge is grazed by a starfish)



Sebastes (A redfish (Sebastes) in the reef)

