

EARLY WARNING BULLETIN No. 3 ON SURFACE & GROUNDWATER QUALITY, ADDIS ABABA, ETHIOPIA

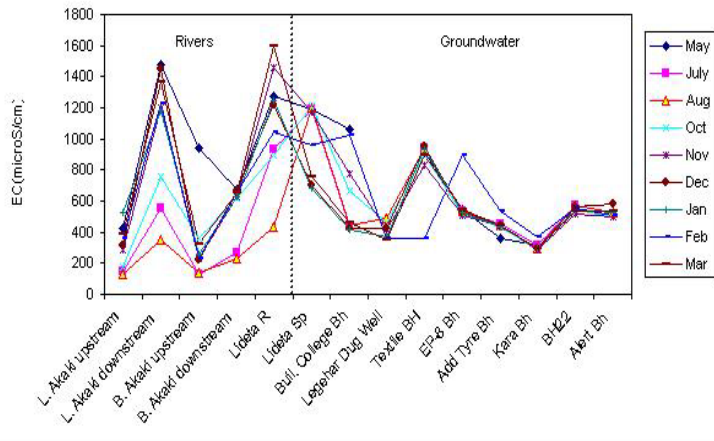


Figure 1. Temporal variation in EC in streams and groundwater

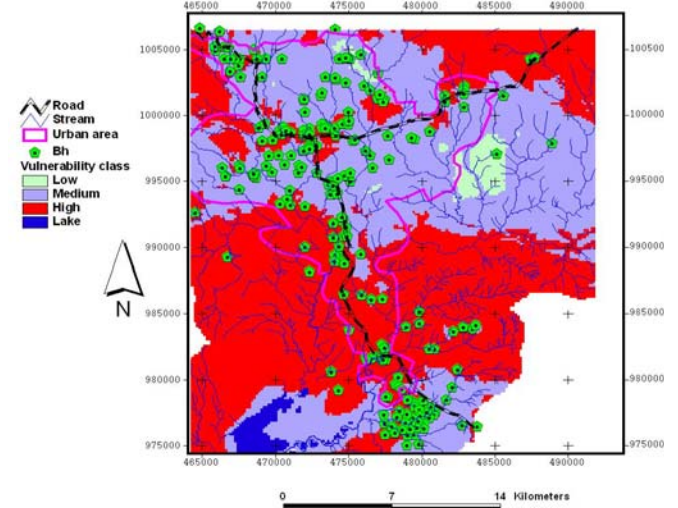


Figure 3. Distribution of boreholes on different vulnerability class

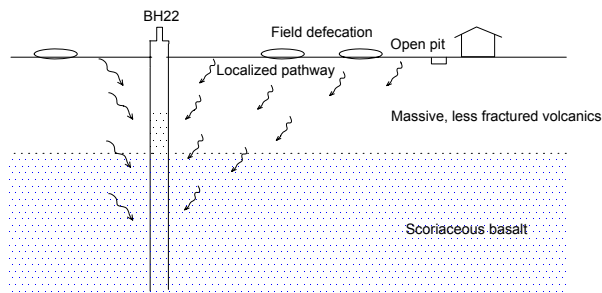


Figure 2. Local bacterial contamination model (Akaki well field)

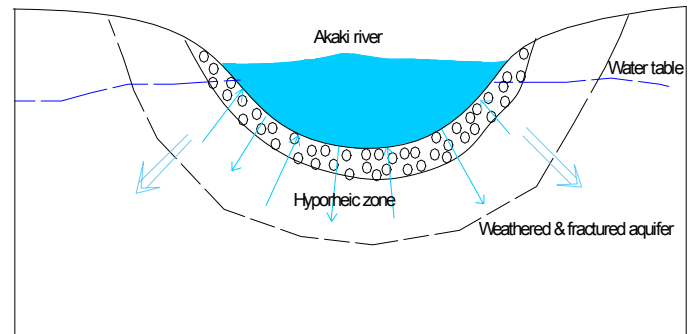


Figure 4. Loosing Akaki river model around Akaki town

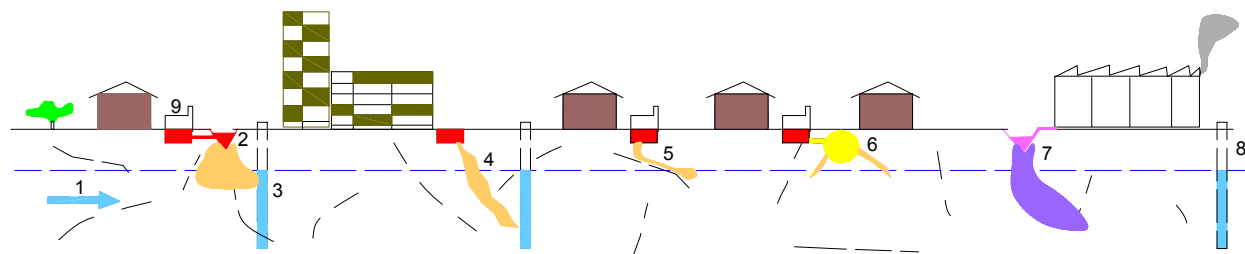


Figure 5. Anthropogenic influences on groundwater in the project area. (1= Direction of groundwater flow, 2= Streams that receive sewage from septic tanks, 3= Boreholes located near by rivers, 4 & 5= Septic tanks that release wastes through fractures, 6= Leaking sewer, 7= Streams that receive industrial effluent, 8= Industrial supply wells)

The quality of groundwater in Addis Ababa's volcanic aquifer is influenced by the quality of recharging surface water.